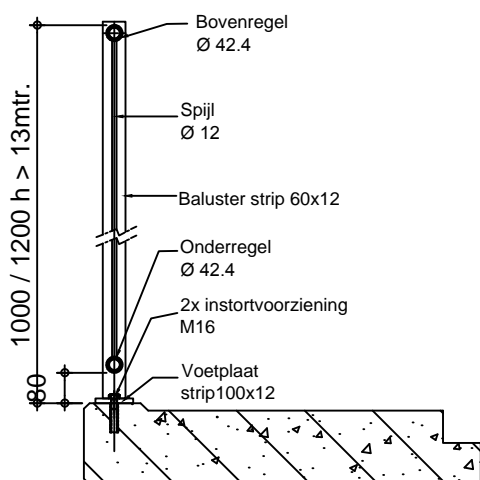


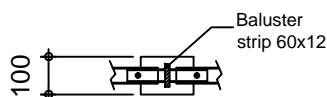
Materialen: St.37

Boven- en onderregel:  $\varnothing 42.4$   
Spijl:  $\varnothing 12$  h.o.h. 112mm  
Baluster: strip 60x12  
Voetplaat: strip 100x12  
Bevestigingsartikelen: Verzinkt/RVS

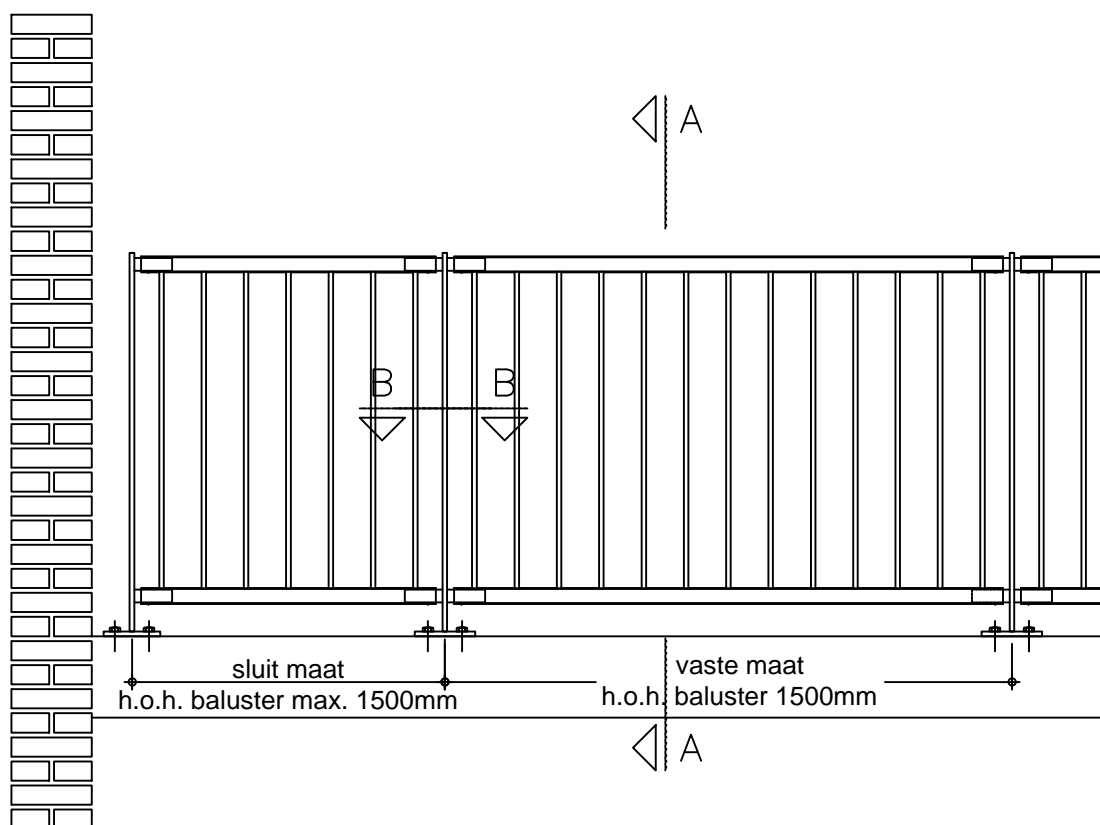
max. belasting  $F=1\text{KN}$ ,  $q=0.5/0.8 \text{ KN/M}$



Doorsnede A-A



Doorsnede B-B



### Afd. Stalen trappen en balustrades

Tel. : 0315 - 769001

E-mail : info@hetra-gss.eu

Website : www.hetra-gss.eu